

2-(3-Pyridinio)benzimidazolium penta-chloridoantimonate(III) monohydrate

Li-Jing Cui, Hai-Jun Xu* and Ke-Ji Pan

Ordered Matter Science Research Center, College of Chemistry and Chemical Engineering, Southeast University, Nanjing 211189, People's Republic of China
Correspondence e-mail: xuhj@seu.edu.cn

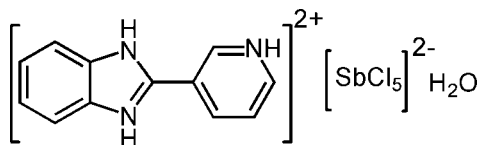
Received 12 May 2009; accepted 19 May 2009

Key indicators: single-crystal X-ray study; $T = 293$ K; mean $\sigma(\text{C}-\text{C}) = 0.005$ Å; R factor = 0.028; wR factor = 0.068; data-to-parameter ratio = 17.1.

In the title compound, $(\text{C}_{12}\text{H}_{11}\text{N}_3)[\text{SbCl}_5]\cdot\text{H}_2\text{O}$, the Sb^{III} centre is surrounded by five Cl atoms and displays a distorted square-pyramidal coordination geometry. The dihedral angle formed by the plane of the imidazole ring system with the pyridine ring is 4.380 (15)°. The crystal structure is stabilized by $\text{N}-\text{H}\cdots\text{Cl}$, $\text{O}-\text{H}\cdots\text{Cl}$ and $\text{N}-\text{H}\cdots\text{O}$ hydrogen bonds, forming a three-dimensional network.

Related literature

For the pharmacologic activity of benzimidazole derivatives, see: Minoura *et al.* (2004); Pawar *et al.* (2004); Demirayak *et al.* (2002).



Experimental

Crystal data

$(\text{C}_{12}\text{H}_{11}\text{N}_3)[\text{SbCl}_5]\cdot\text{H}_2\text{O}$ $c = 14.380$ (3) Å
 $M_r = 514.25$ $\beta = 102.27$ (3)°
 Monoclinic, $P2_1/c$ $V = 1747.2$ (7) Å³
 $a = 9.2619$ (19) Å $Z = 4$
 $b = 13.425$ (3) Å Mo $K\alpha$ radiation

$\mu = 2.35$ mm⁻¹
 $T = 293$ K

$0.25 \times 0.22 \times 0.19$ mm

Data collection

Rigaku SCXmini diffractometer 15623 measured reflections
 Absorption correction: multi-scan 3410 independent reflections
 (*CrystalClear*; Rigaku, 2005) 3037 reflections with $I > 2\sigma(I)$
 $T_{\text{min}} = 0.892$, $T_{\text{max}} = 0.964$ $R_{\text{int}} = 0.043$
 (expected range = 0.592–0.640)

Refinement

$R[F^2 > 2\sigma(F^2)] = 0.028$ 6 restraints
 $wR(F^2) = 0.068$ H-atom parameters constrained
 $S = 0.93$ $\Delta\rho_{\text{max}} = 0.32$ e Å⁻³
 3410 reflections $\Delta\rho_{\text{min}} = -0.48$ e Å⁻³
 199 parameters

Table 1
 Hydrogen-bond geometry (Å, °).

$D-\text{H}\cdots A$	$D-\text{H}$	$\text{H}\cdots A$	$D\cdots A$	$D-\text{H}\cdots A$
$\text{N1}-\text{H1A}\cdots\text{O1W}$	0.86	1.82	2.652 (4)	161
$\text{N3}-\text{H3B}\cdots\text{Cl5}^{\text{i}}$	0.86	2.28	3.056 (3)	150
$\text{N2}-\text{H2B}\cdots\text{Cl2}^{\text{ii}}$	0.86	2.48	3.179 (3)	139
$\text{O1W}-\text{H1WA}\cdots\text{Cl2}^{\text{iii}}$	0.85	2.35	3.197 (3)	172
$\text{O1W}-\text{H1WB}\cdots\text{Cl3}^{\text{iv}}$	0.85	2.35	3.198 (3)	174

Symmetry codes: (i) $x, y, z + 1$; (ii) $-x + 2, -y + 1, -z + 1$; (iii) $x - 1, y, z$; (iv) $x - 1, -y + \frac{1}{2}, z + \frac{1}{2}$.

Data collection: *CrystalClear* (Rigaku, 2005); cell refinement: *CrystalClear*; data reduction: *CrystalClear*; program(s) used to solve structure: *SHELXS97* (Sheldrick, 2008); program(s) used to refine structure: *SHELXL97* (Sheldrick, 2008); molecular graphics: *SHELXTL* (Sheldrick, 2008); software used to prepare material for publication: *SHELXL97*.

HJX acknowledges a start-up grant from Southeast University, China.

Supplementary data and figures for this paper are available from the IUCr electronic archives (Reference: RZ2324).

References

- Demirayak, S., Abu Mohsen, U. & Karaburun, A. C. (2002). *Eur. J. Med. Chem.* **37**, 255–260.
 Minoura, H., Takeshita, S., Ita, M., Hirosumi, J., Mabuchi, M., Kawamura, I., Nakajima, S., Nakayama, O., Kayakiri, H., Oku, T., Ohkubo-Suzuki, A., Fukagawa, M., Kojo, H., Hanioka, K., Yamasaki, N., Imoto, T., Kobayashi, Y. & Mutoh, S. (2004). *Eur. J. Pharmacol.* **494**, 273–281.
 Pawar, N. S., Dalal, D. S., Shimpi, S. R. & Mahulikar, P. P. (2004). *Eur. J. Pharmacol. Sci.* **21**, 115–118.
 Rigaku (2005). *CrystalClear*. Rigaku Corporation, Tokyo, Japan.
 Sheldrick, G. M. (2008). *Acta Cryst.* **A64**, 112–122.

supplementary materials

Acta Cryst. (2009). E65, m674 [doi:10.1107/S1600536809018935]

2-(3-Pyridinio)benzimidazolium pentachloridoantimonate(III) monohydrate

L.-J. Cui, H.-J. Xu and K.-J. Pan

Comment

Benzimidazole and its derivatives have received great attention owing to their pharmacologic activities, such as antidiabetic (Minoura *et al.*, 2004), antifungal (Pawar *et al.*, 2004), and anticancer (Demirayak *et al.*, 2002) activities. In this paper, the crystal structure of the title compound is reported.

The asymmetric unit of the title compound (Fig. 1) contains a 2-(3'-pyridinio)benzimidazolium dication, a pentachloroantimonate dianion and a water molecule. In the anion, the antimony(III) atom is coordinated by five chloride anions in a distorted square-pyramidal geometry. The Sb—Cl distances are in the range 2.3687 (10)- 2.7522 (11) Å. In the cation, the pyridine ring and the imidazole ring system are nearly coplanar, the dihedral angle they form being 4.360 (15)°. The crystal packing (Fig. 2) is stabilized by intermolecular N—H···O, N—H···C and O—H···Cl hydrogen bonds (Table 1), resulting in the formation of a three-dimensional network.

Experimental

To a mixture of 2-(3'-pyridyl)benzimidazole (0.1 mmol) and water (7 ml), concentrated hydrochloric acid (12 M) was added dropwise till complete dissolution of the solid phase. Concentrated hydrochloric acid was similarly added dropwise to dissolve the solid phase persisting in a mixture of antimony trichloride (0.3 mmol) and water (7 ml). The two solutions were then mixed and stirred for 20 minutes. The resulting precipitate was filtered off and dissolved in hydrochloric acid. Colourless crystals suitable for X-ray analysis were formed after several weeks on slow evaporation of the solvent at room temperature.

Refinement

H atoms bound to C and N atoms were positioned geometrically and treated as riding, with C—H = 0.93 Å, N—H = 0.86 Å, and with $U_{\text{iso}}(\text{H}) = 1.2U_{\text{eq}}(\text{C}, \text{N})$. Water H atoms were located in a difference Fourier map and refined with O—H = 0.85 Å and with $U_{\text{iso}}(\text{H}) = 1.2U_{\text{eq}}(\text{O})$.

Figures

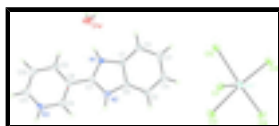


Fig. 1. The molecular structure of the title compound, showing the atomic numbering scheme. Displacement ellipsoids are drawn at the 30% probability level.

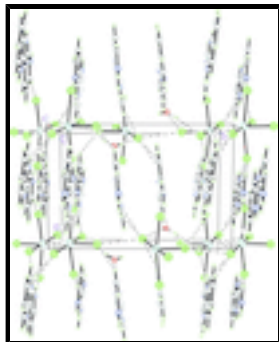


Fig. 2. Packing diagram of the title compound, showing the structure along the *c* axis. Intermolecular H bonds are shown as dashed lines.

2-(3-Pyridinio)benzimidazolium pentachloridoantimonate(III) monohydrate

Crystal data

(C₁₂H₁₁N₃)[SbCl₅]·H₂O

M_r = 514.25

Monoclinic, *P*2₁/*c*

Hall symbol: -*P* 2ybc

a = 9.2619 (19) Å

b = 13.425 (3) Å

c = 14.380 (3) Å

β = 102.27 (3)°

V = 1747.2 (7) Å³

Z = 4

*F*₀₀₀ = 1000

D_x = 1.955 Mg m⁻³

Mo *K*α radiation

λ = 0.71073 Å

Cell parameters from 1647 reflections

θ = 3.0–27.6°

μ = 2.35 mm⁻¹

T = 293 K

Prism, colourless

0.25 × 0.22 × 0.19 mm

Data collection

Rigaku SCXmini
diffractometer

Radiation source: fine-focus sealed tube

Monochromator: graphite

Detector resolution: 13.6612 pixels mm⁻¹

T = 293 K

ω scans

Absorption correction: multi-scan
(CrystalClear; Rigaku, 2005)

T_{min} = 0.892, *T_{max}* = 0.964

15623 measured reflections

3410 independent reflections

3037 reflections with *I* > 2σ(*I*)

R_{int} = 0.043

θ_{max} = 26.0°

θ_{min} = 3.0°

h = -11→11

k = -16→16

l = -17→17

Refinement

Refinement on *F*²

Least-squares matrix: full

R [*F*² > 2σ(*F*²)] = 0.028

wR (*F*²) = 0.068

Secondary atom site location: difference Fourier map

Hydrogen site location: inferred from neighbouring sites

H-atom parameters constrained

w = 1/[σ²(*F_o*²) + (0.0319*P*)² + 2.5497*P*]

$S = 0.93$	where $P = (F_o^2 + 2F_c^2)/3$
3410 reflections	$(\Delta/\sigma)_{\max} = 0.001$
199 parameters	$\Delta\rho_{\max} = 0.32 \text{ e } \text{\AA}^{-3}$
6 restraints	$\Delta\rho_{\min} = -0.47 \text{ e } \text{\AA}^{-3}$
Primary atom site location: structure-invariant direct methods	Extinction correction: none

Special details

Geometry. All e.s.d.'s (except the e.s.d. in the dihedral angle between two l.s. planes) are estimated using the full covariance matrix. The cell e.s.d.'s are taken into account individually in the estimation of e.s.d.'s in distances, angles and torsion angles; correlations between e.s.d.'s in cell parameters are only used when they are defined by crystal symmetry. An approximate (isotropic) treatment of cell e.s.d.'s is used for estimating e.s.d.'s involving l.s. planes.

Refinement. Refinement of F^2 against ALL reflections. The weighted R -factor wR and goodness of fit S are based on F^2 , conventional R -factors R are based on F , with F set to zero for negative F^2 . The threshold expression of $F^2 > \sigma(F^2)$ is used only for calculating R -factors(gt) *etc.* and is not relevant to the choice of reflections for refinement. R -factors based on F^2 are statistically about twice as large as those based on F , and R -factors based on ALL data will be even larger.

Fractional atomic coordinates and isotropic or equivalent isotropic displacement parameters (\AA^2)

	x	y	z	$U_{\text{iso}}^*/U_{\text{eq}}$
Sb1	0.98691 (2)	0.410246 (16)	0.112742 (15)	0.02964 (9)
C11	0.98813 (10)	0.24807 (7)	0.17778 (7)	0.0451 (2)
C12	1.06091 (10)	0.48665 (7)	0.29163 (6)	0.0446 (2)
C13	0.93983 (10)	0.34774 (8)	-0.06139 (6)	0.0445 (2)
C14	1.25689 (10)	0.38926 (8)	0.11321 (8)	0.0516 (3)
C15	0.68651 (10)	0.39170 (8)	0.09585 (6)	0.0434 (2)
C1	0.5091 (3)	0.3717 (2)	0.4685 (2)	0.0280 (7)
C2	0.4622 (4)	0.3711 (3)	0.3703 (2)	0.0346 (7)
H2A	0.3631	0.3642	0.3409	0.042*
C3	0.5715 (4)	0.3813 (3)	0.3187 (3)	0.0412 (9)
H3A	0.5457	0.3804	0.2526	0.049*
C4	0.7199 (4)	0.3929 (3)	0.3638 (3)	0.0463 (10)
H4A	0.7901	0.3989	0.3265	0.056*
C5	0.7658 (4)	0.3958 (3)	0.4611 (3)	0.0433 (9)
H5A	0.8646	0.4046	0.4905	0.052*
C6	0.6566 (4)	0.3849 (2)	0.5131 (2)	0.0304 (7)
C7	0.5252 (3)	0.3714 (2)	0.6244 (2)	0.0280 (7)
C8	0.4838 (4)	0.3694 (2)	0.7169 (2)	0.0289 (7)
C9	0.5913 (4)	0.3773 (3)	0.7992 (2)	0.0376 (8)
H9A	0.6906	0.3812	0.7963	0.045*
N3	0.5509 (4)	0.3794 (2)	0.8830 (2)	0.0421 (7)
H3B	0.6190	0.3841	0.9338	0.051*
C11	0.4115 (5)	0.3745 (3)	0.8920 (3)	0.0417 (9)
H11A	0.3891	0.3776	0.9520	0.050*
C12	0.3373 (4)	0.3627 (3)	0.7250 (2)	0.0364 (8)

supplementary materials

H12A	0.2630	0.3566	0.6705	0.044*
N1	0.4320 (3)	0.3631 (2)	0.54084 (18)	0.0285 (6)
H1A	0.3383	0.3538	0.5328	0.034*
N2	0.6611 (3)	0.3840 (2)	0.6097 (2)	0.0335 (6)
H2B	0.7396	0.3905	0.6536	0.040*
C10	0.3011 (4)	0.3649 (3)	0.8128 (3)	0.0407 (8)
H10A	0.2031	0.3599	0.8182	0.049*
O1W	0.1429 (3)	0.3470 (2)	0.4754 (2)	0.0636 (9)
H1WA	0.1260	0.3892	0.4303	0.076*
H1WB	0.0951	0.2925	0.4676	0.076*

Atomic displacement parameters (\AA^2)

	U^{11}	U^{22}	U^{33}	U^{12}	U^{13}	U^{23}
Sb1	0.02958 (13)	0.02996 (14)	0.02782 (13)	-0.00150 (9)	0.00262 (9)	0.00183 (9)
C11	0.0391 (5)	0.0362 (5)	0.0563 (6)	-0.0002 (4)	0.0014 (4)	0.0136 (4)
C12	0.0442 (5)	0.0505 (5)	0.0366 (5)	-0.0094 (4)	0.0033 (4)	-0.0069 (4)
C13	0.0465 (5)	0.0524 (6)	0.0302 (4)	0.0073 (4)	-0.0016 (4)	-0.0029 (4)
C14	0.0338 (5)	0.0687 (7)	0.0536 (6)	-0.0061 (4)	0.0121 (4)	-0.0013 (5)
C15	0.0362 (5)	0.0638 (6)	0.0294 (4)	0.0076 (4)	0.0051 (4)	-0.0009 (4)
C1	0.0268 (16)	0.0268 (16)	0.0303 (17)	-0.0023 (13)	0.0056 (13)	0.0006 (13)
C2	0.0346 (18)	0.0373 (19)	0.0307 (17)	-0.0029 (15)	0.0042 (14)	0.0015 (15)
C3	0.050 (2)	0.041 (2)	0.0347 (19)	0.0018 (17)	0.0125 (17)	0.0028 (16)
C4	0.043 (2)	0.052 (2)	0.050 (2)	0.0057 (18)	0.0234 (19)	0.0063 (18)
C5	0.0252 (18)	0.054 (2)	0.052 (2)	0.0025 (16)	0.0107 (16)	-0.0012 (18)
C6	0.0258 (16)	0.0304 (17)	0.0345 (18)	0.0018 (13)	0.0051 (14)	0.0005 (14)
C7	0.0243 (16)	0.0278 (16)	0.0296 (17)	-0.0012 (13)	0.0003 (13)	0.0004 (13)
C8	0.0297 (16)	0.0262 (16)	0.0284 (16)	-0.0001 (13)	0.0011 (13)	0.0001 (13)
C9	0.0345 (19)	0.042 (2)	0.0316 (18)	-0.0054 (15)	-0.0032 (15)	-0.0015 (15)
N3	0.0470 (19)	0.0465 (19)	0.0260 (15)	-0.0043 (14)	-0.0073 (13)	-0.0020 (13)
C11	0.056 (2)	0.039 (2)	0.0301 (19)	-0.0013 (17)	0.0093 (17)	-0.0027 (16)
C12	0.0316 (18)	0.043 (2)	0.0312 (18)	-0.0028 (15)	-0.0005 (14)	0.0018 (15)
N1	0.0199 (13)	0.0392 (16)	0.0252 (13)	-0.0065 (11)	0.0026 (10)	0.0025 (12)
N2	0.0215 (13)	0.0430 (17)	0.0331 (15)	-0.0011 (12)	-0.0008 (11)	-0.0007 (13)
C10	0.039 (2)	0.048 (2)	0.0365 (19)	-0.0003 (17)	0.0103 (16)	-0.0029 (17)
O1W	0.0352 (15)	0.074 (2)	0.073 (2)	-0.0205 (14)	-0.0072 (14)	0.0269 (17)

Geometric parameters (\AA , $^\circ$)

Sb1—C11	2.3687 (10)	C7—N1	1.327 (4)
Sb1—C14	2.5149 (11)	C7—C8	1.461 (4)
Sb1—C13	2.5885 (10)	C8—C9	1.379 (5)
Sb1—C12	2.7184 (11)	C8—C12	1.389 (5)
Sb1—C15	2.7522 (11)	C9—N3	1.336 (5)
C1—C2	1.386 (5)	C9—H9A	0.9300
C1—N1	1.387 (4)	N3—C11	1.327 (5)
C1—C6	1.391 (4)	N3—H3B	0.8600
C2—C3	1.383 (5)	C11—C10	1.365 (5)
C2—H2A	0.9300	C11—H11A	0.9300

C3—C4	1.398 (6)	C12—C10	1.374 (5)
C3—H3A	0.9300	C12—H12A	0.9300
C4—C5	1.374 (6)	N1—H1A	0.8600
C4—H4A	0.9300	N2—H2B	0.8600
C5—C6	1.388 (5)	C10—H10A	0.9300
C5—H5A	0.9300	O1W—H1WA	0.8501
C6—N2	1.381 (4)	O1W—H1WB	0.8499
C7—N2	1.331 (4)		
C11—Sb1—C14	88.55 (4)	N2—C7—N1	108.8 (3)
C11—Sb1—C13	93.99 (4)	N2—C7—C8	126.0 (3)
C14—Sb1—C13	85.94 (4)	N1—C7—C8	125.2 (3)
C11—Sb1—C12	89.66 (4)	C9—C8—C12	118.3 (3)
C14—Sb1—C12	89.38 (4)	C9—C8—C7	119.8 (3)
C13—Sb1—C12	173.98 (3)	C12—C8—C7	121.8 (3)
C11—Sb1—C15	82.62 (3)	N3—C9—C8	119.0 (3)
C14—Sb1—C15	167.42 (4)	N3—C9—H9A	120.5
C13—Sb1—C15	85.76 (4)	C8—C9—H9A	120.5
C12—Sb1—C15	99.46 (4)	C11—N3—C9	123.5 (3)
C2—C1—N1	131.6 (3)	C11—N3—H3B	118.2
C2—C1—C6	122.4 (3)	C9—N3—H3B	118.2
N1—C1—C6	106.0 (3)	N3—C11—C10	119.7 (3)
C3—C2—C1	116.0 (3)	N3—C11—H11A	120.2
C3—C2—H2A	122.0	C10—C11—H11A	120.2
C1—C2—H2A	122.0	C10—C12—C8	120.6 (3)
C2—C3—C4	121.5 (4)	C10—C12—H12A	119.7
C2—C3—H3A	119.3	C8—C12—H12A	119.7
C4—C3—H3A	119.3	C7—N1—C1	109.4 (3)
C5—C4—C3	122.4 (4)	C7—N1—H1A	125.3
C5—C4—H4A	118.8	C1—N1—H1A	125.3
C3—C4—H4A	118.8	C7—N2—C6	109.5 (3)
C4—C5—C6	116.2 (3)	C7—N2—H2B	125.3
C4—C5—H5A	121.9	C6—N2—H2B	125.3
C6—C5—H5A	121.9	C11—C10—C12	118.9 (4)
N2—C6—C5	132.3 (3)	C11—C10—H10A	120.5
N2—C6—C1	106.3 (3)	C12—C10—H10A	120.5
C5—C6—C1	121.4 (3)	H1WA—O1W—H1WB	117.8

Hydrogen-bond geometry (Å, °)

<i>D</i> —H... <i>A</i>	<i>D</i> —H	H... <i>A</i>	<i>D</i> ... <i>A</i>	<i>D</i> —H... <i>A</i>
N1—H1A...O1W	0.86	1.82	2.652 (4)	161
N3—H3B...C15 ⁱ	0.86	2.28	3.056 (3)	150
N2—H2B...C12 ⁱⁱ	0.86	2.48	3.179 (3)	139
O1W—H1WA...C12 ⁱⁱⁱ	0.85	2.35	3.197 (3)	172
O1W—H1WB...C13 ^{iv}	0.85	2.35	3.198 (3)	174

Symmetry codes: (i) $x, y, z+1$; (ii) $-x+2, -y+1, -z+1$; (iii) $x-1, y, z$; (iv) $x-1, -y+1/2, z+1/2$.

Fig. 1

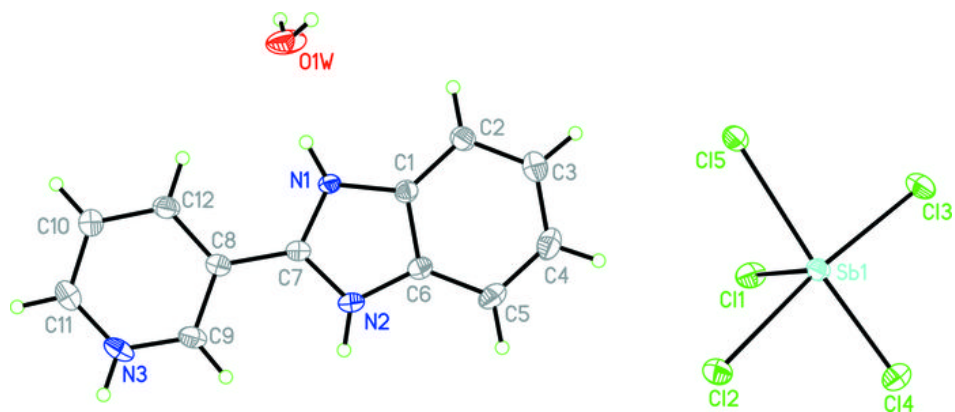


Fig. 2

